

Butler Farms / Oak Creek Village

Stormwater Study Group Meeting

June 3, 2008

Agenda

- 7:00 – 7:10 Update on State permitting in stormwater impaired watersheds.
- 7:10 – 7:20 Update on grants obtained for Butler Farms / Oak Creek Village
- 7:20 – 7:50 Project wide overview. Topics for Discussion include:
 - Discussion of proposed innovative stormwater treatment practices
 - Stormwater micropool on City owned land between Oak Creek Drive and Hinesburg Road
 - Proposed stormwater pond on City owned land between Marcy Street and Hinesburg Road
 - Pervious pavement installation
 - UVM's role.
- 7:50 – 8:05 Latest cost figures
- 8:05 – 8:25 Q&A
- 8:25 – 8:30 Next steps

Highlights from ANR's SWAG Meeting

- State has reconvened the SWAG.
 - Picking up where it left off over a year ago.
- SWAG = Stormwater Advisory Group
 - Made up of a diverse group of stormwater professionals including: State regulators, municipal staff, CLF, realtors, business groups, UVM, scientists, engineers, etc...
- Flow targets for stormwater impaired watersheds have been approved by EPA.
- Next step is implementation plan. How will ANR reach the targets it has set?
- Creation of working groups including:
 - Metrics and monitoring
 - Cost / Funding Options

Continued on next slide...

Highlights from ANR's SWAG Meeting

- Other topics discussed:
- Municipal involvement
- Future growth
- Phasing – Could be based on:
 - Cost
 - Municipal
 - % of target
 - Implementability
 - Effect of BMP measures
 - Upgrades of BMPs
- Selected slides from ANR presentation (to follow)

Potash

- Targets:
 - Q0.3: -17.9%
 - Q95: +12.2%
- Cost: \$25.5 million
- 236 BMPs (122 detention, 114 infiltration)
- 38.4% of the impervious needs treatment

Legend

Potash Subwatersheds

Infiltration BMP Volume (ac-ft)

- 0.000 - 0.065
- 0.066 - 0.200
- 0.201 - 0.325
- 0.326 - 0.750
- 0.751 - 1.280

Detention BMP Volume (ac-ft)

- 0.020 - 0.152
- 0.153 - 0.351
- 0.352 - 0.672
- 0.673 - 1.785
- 1.786 - 3.304

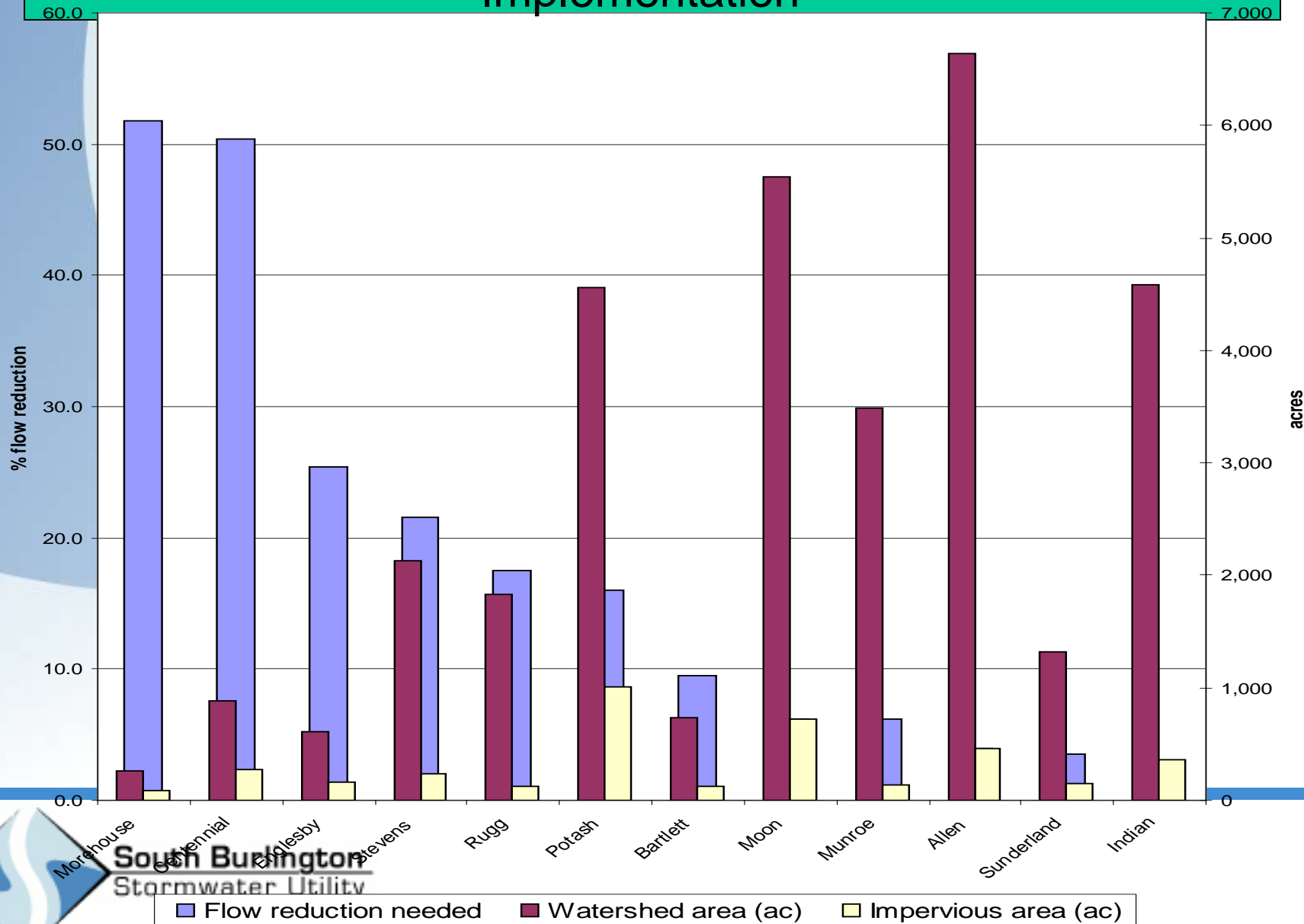
Potash_brook

0 0.125 0.25 0.5 0.75 1 Miles



Southwestern
Stormwater Utility

Stormwater Impaired Watersheds – Level of Difficulty in Implementation



Link to State SWAG Web Site

<http://www.vtwaterquality.org/stormwater/htm/SWAG.htm>

Site currently has information for 4/30/2008 meeting
(mostly review of old information)

As of 6/3/08, it has not been updated to show information
from 5/29/08 meeting

Grants Obtained for SW Work in BF/OCV

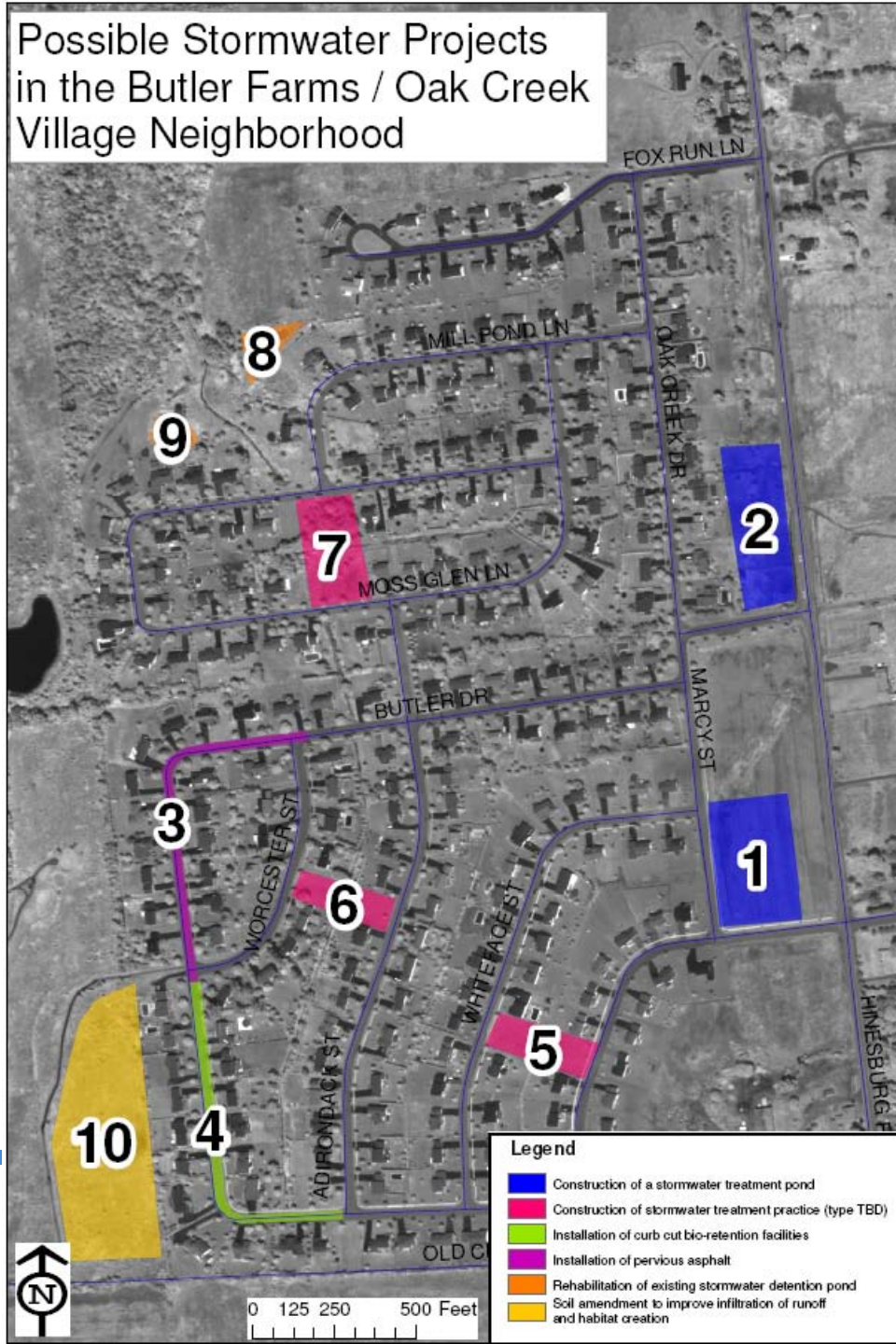
- EPA Demonstration Grant
- SAFETEA Grant – OCV Micropool
- SAFETEA Grant – Butler Farms Pond

Totals almost \$2M dollars ! ! !

(additional cost information later in presentation)

Project Overview

- EPA Demonstration Grant:
 - Includes Areas: 3,4,5,6,7,8,9,10
- SAFETEA Grant – OCV Micropool
 - Includes Area 2
- SAFETEA Grant – Butler Farms Pond
 - Includes Area 1
- Detailed information on various components to follow

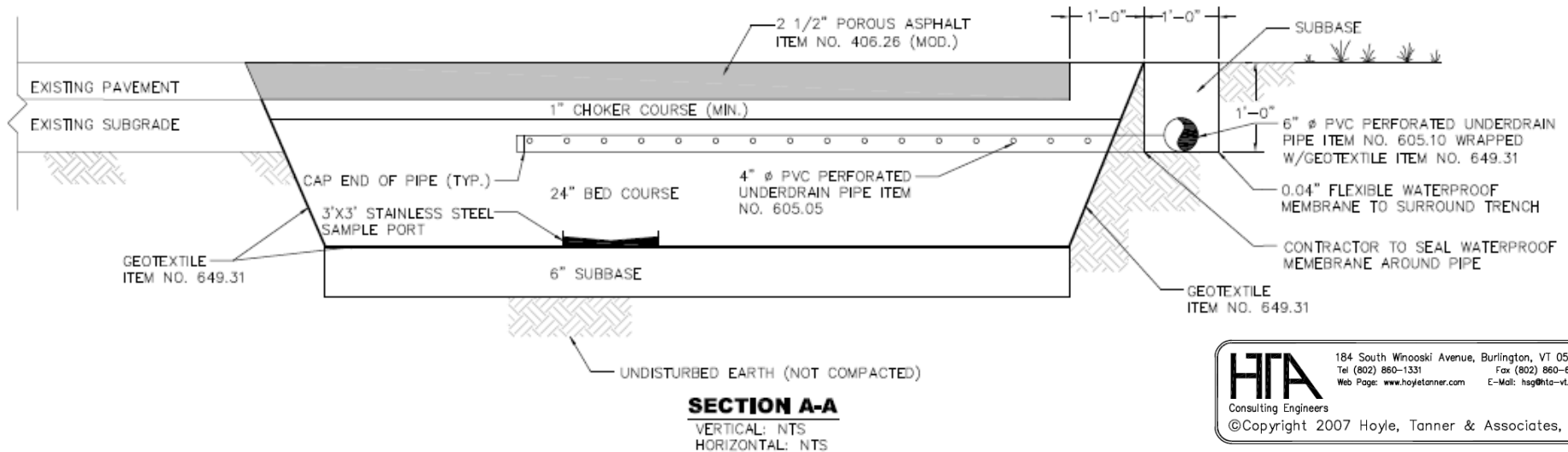


OCV Micropool

Butler Farms Pond

Street Edge Alternatives

Porous Pavement



HTA
 Consulting Engineers
 ©Copyright 2007 Hoyle, Tanner & Associates, Inc.

184 South Winooski Avenue, Burlington, VT 05401
 Tel (802) 860-1331 Fax (802) 860-6499
 Web Page: www.hoyletanner.com E-Mail: hsg@hta-vt.com

UVM's Role

Cost Information

Q & A

Next Steps